

The Salisbury

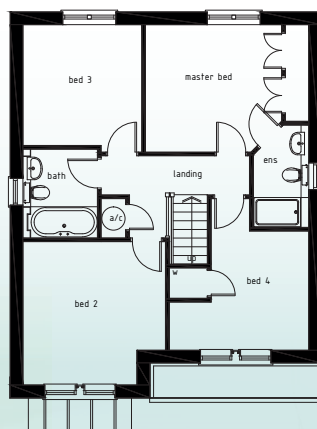
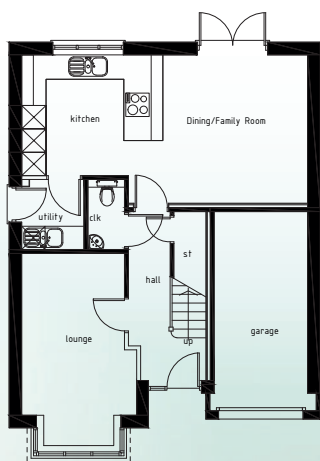
Plot 4

(GIFA excl Garage 118m² / 1272sqft)

4 bedroom, 3 bathroom detached home
with integral single garage

This stylish modern home is both beautiful and practical. The bright, open-plan kitchen dining area runs along the back of the house, opening onto the garden, creating a hub for family life. A separate lounge offers a relaxing retreat, while well-designed functional features, such as a utility room and under stairs storage enhance the pleasure of living here. Freehold.





GROUND FLOOR

FIRST FLOOR

Ground Floor	Size (m)	Size (ft)
Kitchen	3.59m x 3.10m	11'7" x 10'1"
Dining	3.56m x 3.92m	11'6" x 12'8"
Living	2.95m x 4.79m	9'6" x 15'7"
WC	0.94m x 1.8m	3'0" x 5'9"
Garage	2.40m x 5.20m	7'8" x 17'0"
Utility	1.60m x 1.80m	5'2" x 5'9"

First floor	sizes (m)	sizes (ft)
Bedroom 1	3.28m x 4.13m	10'7" x 13'5"
Bedroom 2	3.69m x 3.59m	12'1" x 11'7"
Bedroom 3	3.11m x 3.06m	10'2" x 10'0"
Bedroom 4	3.59m x 3.87m	11'7" x 12'6"
Ensuite	1.20m x 2.4m	3'9" x 12'7"
Bathroom	2.30m x 1.92m	7'5" x 6'2"

(GIFA excl Garage 118m2 / 1272sqft)

*all images illustrative only

** all sizes approximate